

## NEW DRUGS: Ropinirole or ReQuip®

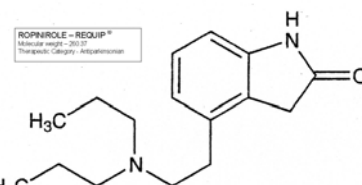
Submitted by Jay Vargas

Maricopa County Forensic Science Center, 701 W. Jefferson Phoenix, AZ 85007-2908

jvargas@mail.maricopa.gov

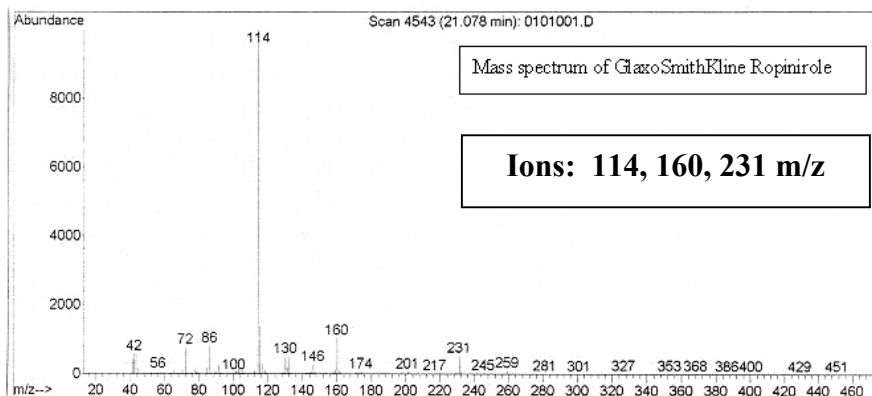


Ropinirole is an orally administered anti-Parkinsonian drug distributed by GlaxoSmithKline. It is prescribed in pentagonal film-coated tablets: 0.25 mg, 0.50 mg, 1, 2, 3, 4, or 5 mg. Although Ropinirole was approved by the FDA in 1997, this will be the first documentation about this drug being detected in a forensic setting.



### Chemical Properties

- 4-[2-(dipropylamino)ethyl]-1,3-dihydro-2H-indol-2-one monohydrochloride.
- C<sub>16</sub>H<sub>24</sub>N<sub>2</sub>O·HCl
- Molecular weight 260.38
- Formula weight 296.84
- Ropinirole is a basic drug that can be extracted with an n-butylchloride liquid/liquid extraction and can be detected after an acid back extraction.
- Detection of Ropinirole is possible on either a GC/NPD or GC/MS



**Elution Order:** Doxepin (Cis), Nortriptyline, Trimipramine, **ROPINIROLE**, Imipramine, Doxepin (trans), Procainamide

### Case Study

- 73-year old man was found unresponsive by the pool at his residence. He then fell into the pool when a family member attempted to help him up.
- Cause of death:
  - Complications of blunt force head trauma due to past falls
  - Parkinson's Disease.
- Mode of death: Accident.