

## New Drugs

# Iloperidone (Fanapt™)

Dan Anderson, Supervising Criminalist II

Los Angeles County Dept of Coroner 1104 N. Mission Road, Los Angeles, CA 90033 [Danderson@coroner.lacounty.gov](mailto:Danderson@coroner.lacounty.gov)

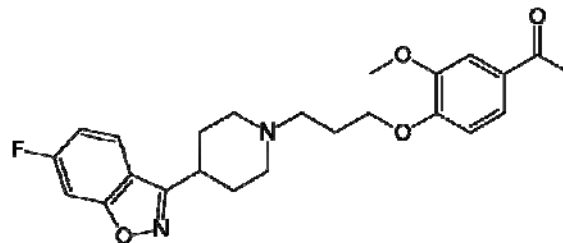
Iloperidone, active ingredient of Fanapt™, is a new atypical antipsychotic drug that was recently approved by the FDA on May 6, 2009. In fact, according to the Vanda Pharmaceuticals Inc website, the drug is so new that it will be “Available in U.S. Pharmacies Soon.”

Iloperidone is considered an antagonist and blocks the sites of noradrenaline ( $\alpha_{2C}$ ), dopamine ( $D_{2A}$  and  $D_3$ ), and serotonin ( $5-HT_{1A}$  and  $5-HT_6$ ) receptors. A recommended target dose of Fanapt™ is 12 to 24 mg/day, administered twice daily. Starting at a dose of 1 mg twice daily, then moving to 2, 4, 6, 8, 10, and 12 mg twice daily on days 2, 3, 4, 5, 6, and 7 respectively, to reach the 12 to 24 mg/day dose range.



### General Information

Common Name:	Iloperidone
Trade Names:	Fanapt™, Fanapta, Zomaril
Chemical Name:	1-[4-[3-[4-(6-fluoro-1,2-benzisoxazol-3-yl)-1-piperidinyl]propoxy]-3-methoxyphenyl]ethanone
Chemical Formula:	$C_{24}H_{27}FN_2O_4$
Formula Weight:	426.481g/mol
CAS Number:	133454-47-4
Administration:	Tablets -1, 2, 4, 6, 8, 10, and 12 mg



### Pharmacokinetics

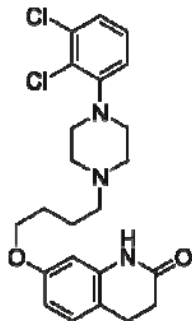
Protein Binding:	Approximately 95%
Metabolism:	Extensively metabolized -Hepatic (CYP2D6 & CYP3A4)
Half-Life:	18-33 hours
Excretion:	Urine and Feces

### Toxicology:

Unknown, however if compared with other similar atypical antipsychotics along with its large molecular weight and small tablet dosages, therapeutic concentrations are expected to be low and most likely detectable by LC/MS/MS.

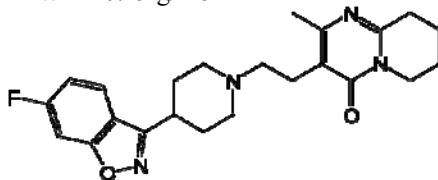
### Aripiprazole (Abilify®)

MW=448.39 g/mol



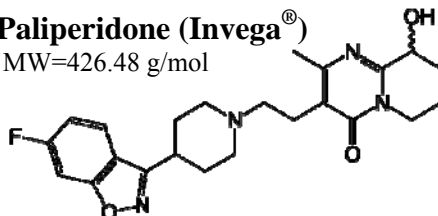
### Risperidone (Risperdal®)

MW=410.49 g/mol



### Paliperidone (Invega®)

MW=426.48 g/mol



### Ziprasidone (Geodon®)

MW=412.94 g/mol

